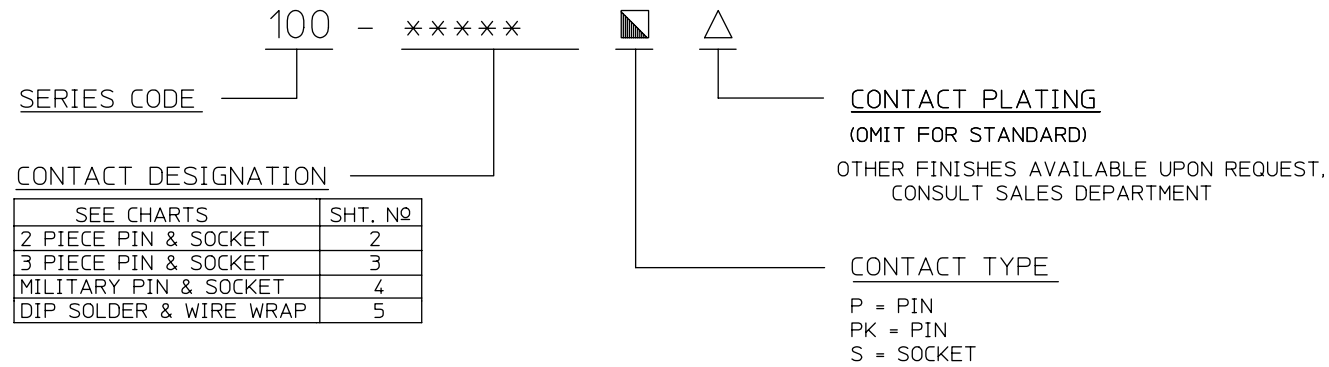


REV	DESCRIPTION	BY DATE	APPD
H	REVISED PER ECR# 6003	C.W.B. 09/16/99	W.P.M.

NOTES:

- REF - WIRE STRIP LENGTH TO BE .187/4.75.
- CRIMP CONTACTS AVAILABLE ON REELS (2000/REEL). SEE CHART FOR REEL PART NO.
- CATALOG NUMBER CODE:

100 SERIES CODE ORDER CHART



SPECIFICATIONS

MATERIALS & FINISHES

- ① *Socket Contact* ————— Material: Copper Alloy
Finish: Standard= 8µ"/0.2µm Min Gold Over Nickel
Military= 50µ"/1.25µm Min Gold Over Nickel
- ② *Pin Contact* ————— Material: Copper Alloy
Finish: Standard= 8µ"/0.2µm Min Gold Over Nickel
Military= 50µ"/1.25µm Min Gold Over Nickel
- ③ *Retainer Clip* ————— Material: Standard= Beryllium Copper Alloy
Finish: Gold Plated
- ④ *Contact Spring* ————— Material: Beryllium Copper Alloy
Finish: Standard= Nickel Plated
Military= Gold Plated
- ⑤ *Contact Spring* ————— Material: Beryllium Copper Alloy
Finish: Gold Plated

PERFORMANCE CHARACTERISTICS

Conforms to ————— MIL-C-39029

Current rating ————— 7.5 amps. max. for Ø.040/1.02 per individual contact
13 amps. max. for Ø.0625/1.587 per individual contact

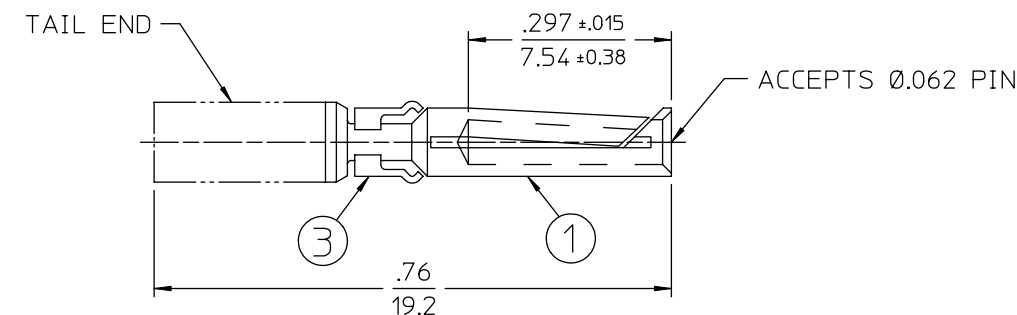
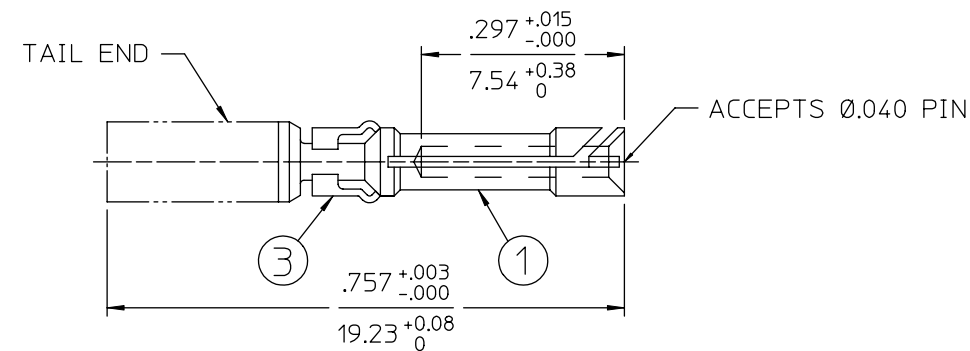
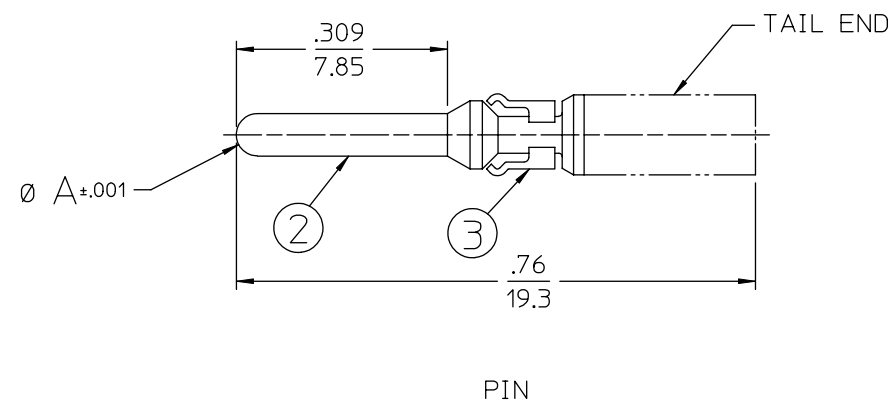
ACCESSORY TOOLS

DESCRIPTION	CATALOG NO	LOCATORS/POSITIONERS	CRIMP DEPTH BLOCK	SPANNER WRENCH
INSERTION TOOL	107-1015	—————	—————	—————
REMOVAL TOOL	107R-1001			
REMOVAL TOOL	107-1005			
NON-ADJUSTABLE HAND CRIMP MS-3191-2	107-0970	107-0981 (#14) 107-0977 (#16,#18) 107-0976 (#20,#22,#24,#26)	—————	—————
HAND CRIMP	107-0903-2A	107-0945	—————	107-1102
PNEUMATIC AUTOMATIC CRIMP	107-0961	—————	107-0965-#20 107-0966-#16	—————
NON-ADJUSTABLE MINIATURE HAND CRIMP	107-43300	107-43304 107-0993 (#20,#22,#24,#26)	—————	—————
ADJUSTABLE MINIATURE HAND CRIMP	107-0625	107-0628	—————	—————
CONTACT PIN STRAIGHTENER	107-1024	—————	—————	—————
GAGE PLUG	5431	—————	—————	—————

PER ANSI Y14.5M-1982 UNLESS OTHERWISE SPECIFIED: DIMENSIONS ARE IN INCHES OR INCHES / MM		Litton Winchester Electronics 400 PARK ROAD WATERTOWN, CONNECTICUT 06795	
TOLERANCES DECIMALS .xx ±.02 .xxx ±.010 ANGLES ±		SCALE: 5:1	
CUSTOMER DRAWING		TITLE MRAC REMOVABLE PIN & SOCKET CONTACTS	
DRAWN K.D.B.	DATE 03/28/96	CHECKED W.P.M.	DATE 03/29/96
APPROVED V.B.H.	DATE 03/28/96	APPROVED R.D.R.	DATE 03/29/96
C		22891	SHT. 1 OF 5
		REV.	H

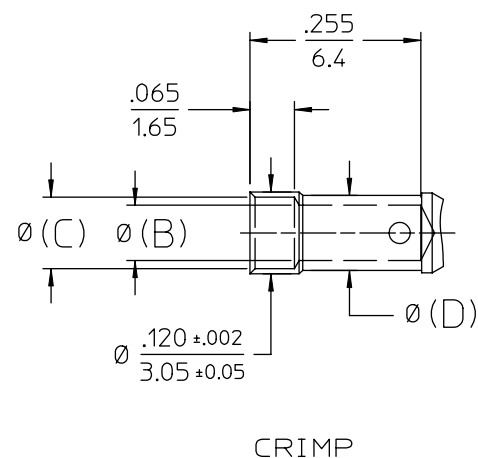
June 2006 - This drawing became the property of Winchester Electronics Corporation, Wallingford, CT.

REV	DESCRIPTION	BY DATE	APPD
H	REVISED PER ECR# 6003	C/M/B 09/16/99	M.P.M.

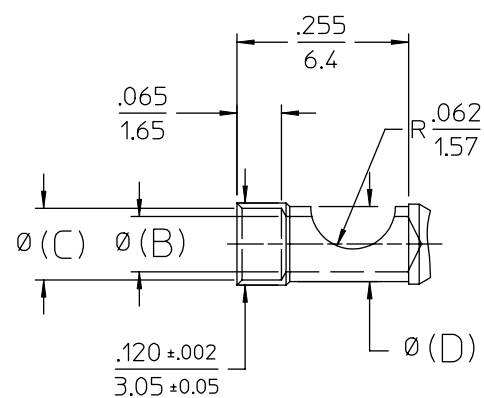


2 PIECE SOCKETS

TAIL OPTIONS



CRIMP



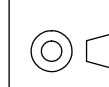
SOLDER

PIN Ø A = .0625/1.587				PIN Ø A = .040/1.02				WIRE SIZE	B	C	D
CRIMP CAT. NO		SOLDER CAT. NO		CRIMP CAT. NO		SOLDER CAT. NO					
CONTACT	REEL [2]	CONTACT	REEL	CONTACT	REEL [2]	CONTACT	REEL				
100-1026P-Δ	100-0963P-Δ	—	—	—	—	—	—	26-28-30	.024/0.61	.050/1.27	.077/1.95
100-1024P-Δ	100-0917P-Δ	100-2524P-Δ	—	100-2024P-Δ	100-0951P-Δ	100-2624P-Δ	—	24-26-28	.027/0.68	.055/1.40	.077/1.95
100-1022P-Δ	100-0907P-Δ	100-2522P-Δ	—	100-2022P-Δ	100-0947P-Δ	100-2622P-Δ	—	22-24-26	.033/0.84	.055/1.40	.077/1.95
100-1020P-Δ	100-0915P-Δ	100-2520P-Δ	—	100-2020P-Δ	100-0945P-Δ	100-2620P-Δ	—	20-22-24	.046/1.17	.069/1.75	.077/1.95
100-1018P-Δ	100-0913P-Δ	100-2518P-Δ	—	100-2018P-Δ	100-0943P-Δ	100-2618P-Δ	—	18-20-22	.052/1.32	.078/1.98	.096/2.44
100-1016P-Δ	100-0911P-Δ	100-2516P-Δ	—	100-2016P-Δ	100-0949P-Δ	100-2616P-Δ	—	16-18-20	.068/1.73	.094/2.39	.110/2.79
100-1014P-Δ	100-0909P-Δ	100-2514P-Δ	—	—	—	—	—	14-16-18	.081/2.06	.105/2.67	.110/2.79
100-1012P-Δ	100-0903P-Δ	—	—	—	—	—	—	12-14	.098/2.49	—	.120/3.05
100-1026S-Δ	100-0965S-Δ	—	—	—	—	—	—	26-28-30	.024/0.61	.050/1.27	.077/1.95
100-1024S-Δ	100-0927S-Δ	100-2524S-Δ	—	100-2024S-Δ	100-0941S-Δ	100-2624S-Δ	—	24-26-28	.027/0.68	.055/1.40	.077/1.95
100-1022S-Δ	100-0908S-Δ	100-2522S-Δ	—	100-2022S-Δ	100-0937S-Δ	100-2622S-Δ	—	22-24-26	.033/0.84	.055/1.40	.077/1.95
100-1020S-Δ	100-0925S-Δ	100-2520S-Δ	—	100-2020S-Δ	100-0935S-Δ	100-2620S-Δ	—	20-22-24	.046/1.17	.069/1.75	.077/1.95
100-1018S-Δ	100-0923S-Δ	100-2518S-Δ	—	100-2018S-Δ	100-0933S-Δ	100-2618S-Δ	—	18-20-22	.052/1.32	.078/1.98	.096/2.44
100-1016S-Δ	100-0921S-Δ	100-2516S-Δ	—	100-2016S-Δ	100-0939S-Δ	100-2616S-Δ	—	16-18-20	.068/1.73	.094/2.39	.110/2.79
100-1014S-Δ	100-0919S-Δ	100-2514S-Δ	—	—	—	—	—	14-16-18	.081/2.06	.105/2.67	.110/2.79

PER ANSI Y14.5M-1982
UNLESS OTHERWISE SPECIFIED:
DIMENSIONS ARE IN INCHES.
TOLERANCES
DECIMALS .xx ±.02
.xxx ±.010
ANGLES ± SCALE: 5:1

Litton
Winchester Electronics
400 PARK ROAD
WATERTOWN, CONNECTICUT
06795

CUSTOMER DRAWING

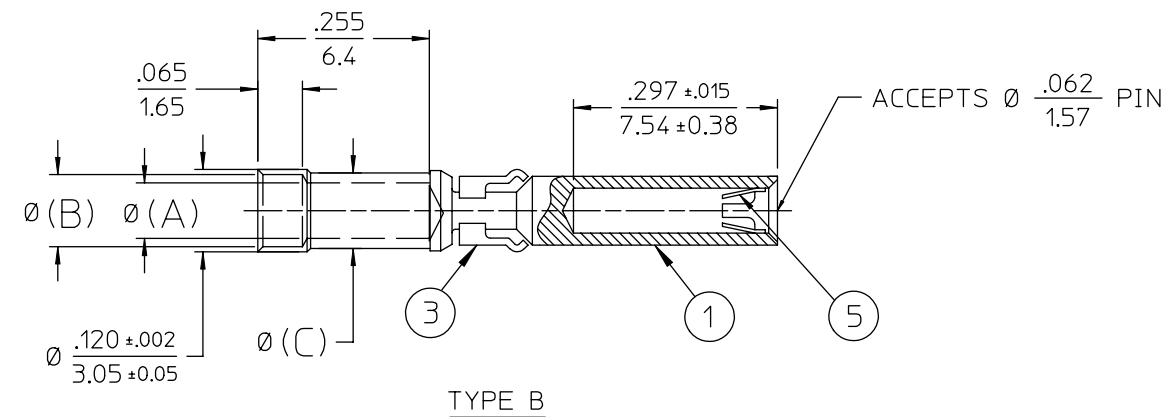
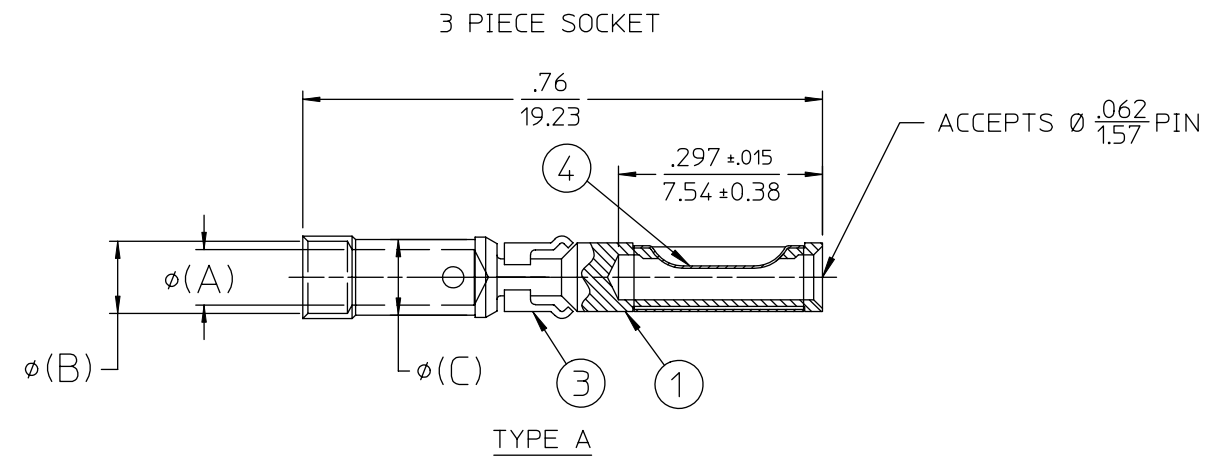
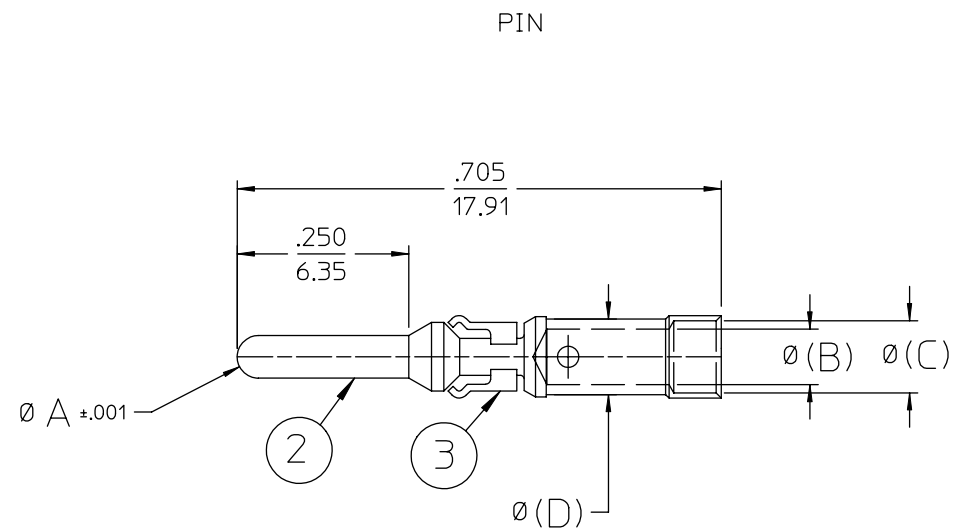


TITLE
MRAC REMOVABLE
PIN & SOCKET CONTACTS

DRAWN	DATE	CHECKED	DATE
Donna	05/18/94	J.M.G.	08/18/94
APPROVED	DATE	APPROVED	DATE
V.B.H.	08/18/94	D.R.	08/19/94

C	22891	SHT. 2 OF 5	REV.
			H

REV	DESCRIPTION	BY DATE	APPD
H	REVISED PER ECR# 6003	C.W.B. 09/16/99	W.P.M.



PIN $\phi A = .0625/1.587$		PIN $\phi A = .040/1.02$		WIRE SIZE	B	C	D
CONTACT	REEL	CONTACT	REEL				
100-1024PK-Δ	100-0976PK-Δ	100-2024PK-Δ	100-0990PK-Δ	24-26-28	.027/0.68	.055/1.40	.077/1.95
100-1022PK-Δ	100-0975PK-Δ	100-2022PK-Δ	100-0980PK-Δ	22-24-26	.033/0.84		
100-1020PK-Δ	100-0974PK-Δ	100-2020PK-Δ	100-0998PK-Δ	20-22-24	.046/1.17	.069/1.75	.096/2.44
100-1018PK-Δ	100-0973PK-Δ	100-2018PK-Δ	100-0989PK-Δ	18-20-22	.052/1.32	.078/1.98	
100-1016PK-Δ	100-0972PK-Δ	100-2016PK-Δ	100-0988PK-Δ	16-18-20	.068/1.73	.094/2.39	.110/2.79
100-1014PK-Δ	100-0971PK-Δ	—	—	14-16-18	.081/2.06	.105/2.67	

CATALOG NO	REEL CAT. NO	WIRE SIZE	A	B	C	TYPE	
100-51014S-Δ	100-0981S-Δ	14-16-18	.081/2.06	.105/2.67	.110/2.79	A	
100-51016S-Δ	100-0982S-Δ	16-18-20	.067/1.70	.094/2.39			
100-51018S-Δ	100-0983S-Δ	18-20-22	.052/1.32	.078/1.98	.096/2.44		
100-51020S-Δ	100-0984S-Δ	20-22-24	.045/1.14	.067/1.70			
100-51022S-Δ	100-0985S-Δ	22-24-26	.033/0.84	.055/1.40	.077/1.95		
100-51024S-Δ	100-0986S-Δ	24-26-28	.027/0.68				
100-51026S-Δ	100-0987S-Δ	26-28-30	.024/0.61	.050/1.27	B		
100-61014S-Δ	100-8024S-Δ	14-16-18	.081/2.06	.105/2.67			.110/2.79
100-61016S-Δ	100-8025S-Δ	16-18-20	.067/1.70	.094/2.39			
100-61018S-Δ	100-8026S-Δ	18-20-22	.052/1.32	.078/1.98			.096/2.44
100-61020S-Δ	100-8027S-Δ	20-22-24	.045/1.14	.067/1.70			
100-61022S-Δ	100-8028S-Δ	22-24-26	.033/0.84	.055/1.40		.077/1.95	
100-61024S-Δ	100-8029S-Δ	24-26-28	.027/0.68				
100-61026S-Δ	100-8030S-Δ	26-28-30	.024/0.61	.050/1.27			

PER ANSI Y14.5M-1982
UNLESS OTHERWISE SPECIFIED:
DIMENSIONS ARE IN INCHES OR INCHES / MM

TOLERANCES
DECIMALS .xx ± .02
.xxx ± .010
ANGLES ± SCALE: 5:1

CUSTOMER DRAWING

DRAWN DATE CHECKED DATE
K.D.B. 03/28/96 W.P.M. 03/29/96

APPROVED DATE APPROVED DATE
V.B.H. 03/28/96 R.D.R. 03/29/96

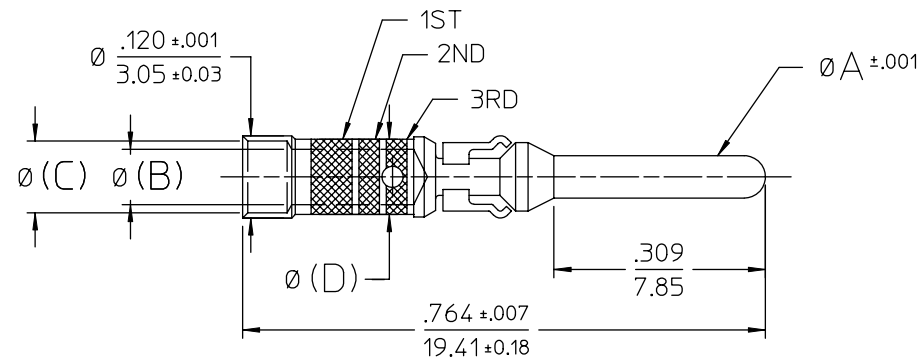
Litton
Winchester Electronics
400 PARK ROAD
WATERTOWN, CONNECTICUT
06795

TITLE
MRAC REMOVABLE
PIN & SOCKET CONTACTS

C	22891	SHT. 3 OF 5	REV. H
---	-------	-------------	--------

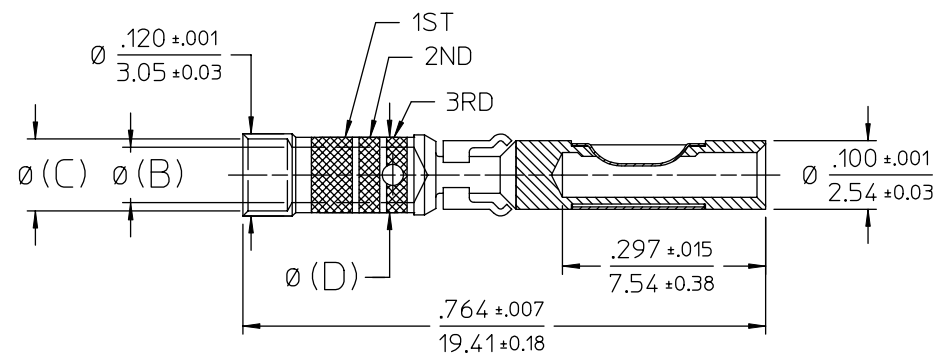
MILITARY PIN & SOCKET ASSEMBLIES

REV	DESCRIPTION	BY DATE	APPD
H	REVISED PER ECR# 6003	C.M.B. 09/16/99	W.P.M.

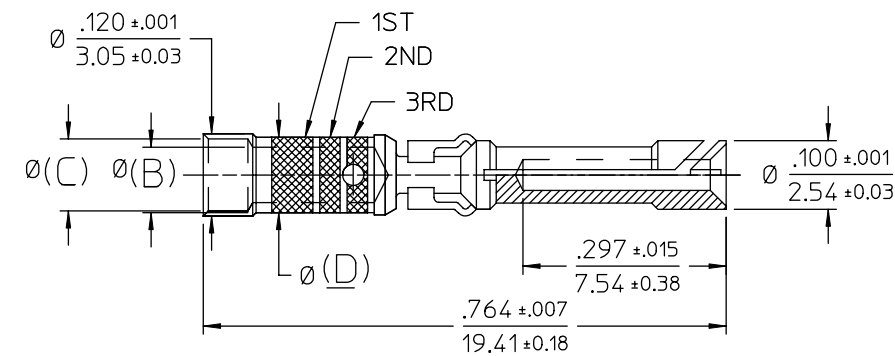


PIN CONTACTS

PARTS LIST											
MILITARY CONTACT CAT. NO	W.E.D. CONTACT CAT. NO	REEL CAT. NO	COLOR BANDS			WIRE SIZE	PIN Ø A	B	C	D	USED IN CONNECTOR SERIES
			1ST	2ND	3RD						
M39029/34-271	100R-2020P95	100R-0945P95	RED	VIOLET	BROWN	20-22-24	.040/1.02	.046/1.17	.069/1.75	.077/1.95	M28748
M39029/34-272	100R-1020P95	100R-0915P95			RED	20-22-24					
M39029/34-273	100B-1016P95	100B-0911P95			ORANGE	16-18-20					



CATALOG NO'S M39029/35-275 & -276 SHOWN



CATALOG NO M39029/35-274 SHOWN

SOCKET CONTACTS

PARTS LIST											
MILITARY CONTACT CAT. NO	W.E.D. CONTACT CAT. NO	REEL CAT. NO	COLOR BANDS			WIRE SIZE	MATING PIN Ø	B	C	D	USED IN CONNECTOR SERIES
			1ST	2ND	3RD						
M39029/35-274	100R-2020S95	100R-0979S95	RED	VIOLET	YELLOW	20-22-24	.040/1.02	.046/1.17	.069/1.75	.077/1.95	M28748
M39029/35-275	100R-51020S95	100R-0984S95			GREEN	20-22-24					
M39029/35-276	100B-51016S95	100B-0982S95			BLUE	16-18-20					

PER ANSI Y14.5M-1982
UNLESS OTHERWISE SPECIFIED:
DIMENSIONS ARE IN INCHES OR INCHES / MM

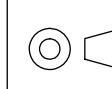
TOLERANCES
MM
DECIMALS .xx ± .02
.xxx ± .010
ANGLES ± X° SCALE: 5:1

Litton

Winchester
Electronics

400 PARK ROAD
WATERTOWN, CONNECTICUT
06795

**CUSTOMER
DRAWING**



TITLE

MRAC REMOVABLE
PIN & SOCKET CONTACTS

DRAWN	DATE	CHECKED	DATE
K.D.B.	03/28/96	W.P.M.	03/29/96
APPROVED	DATE	APPROVED	DATE
V.B.H.	03/28/96	R.D.R.	03/29/96

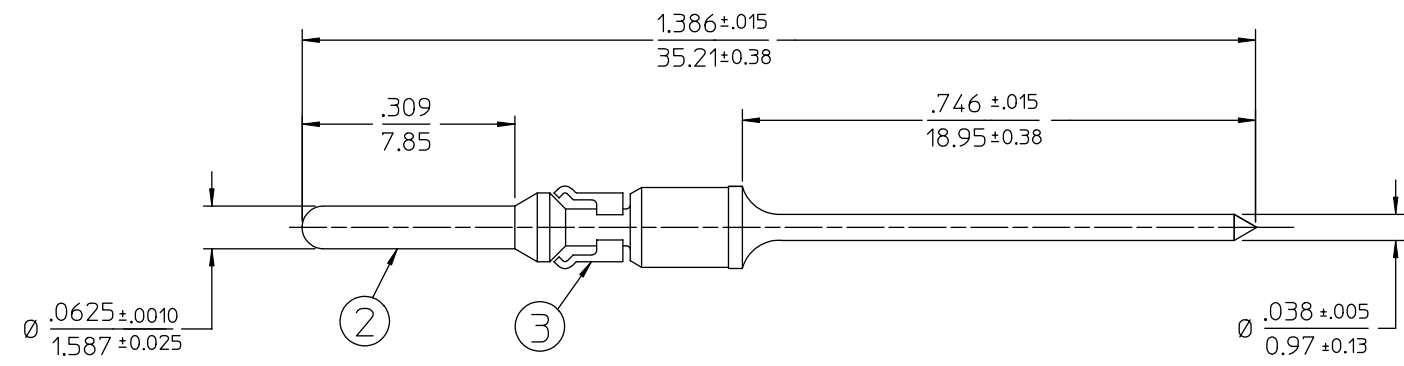
C

22891

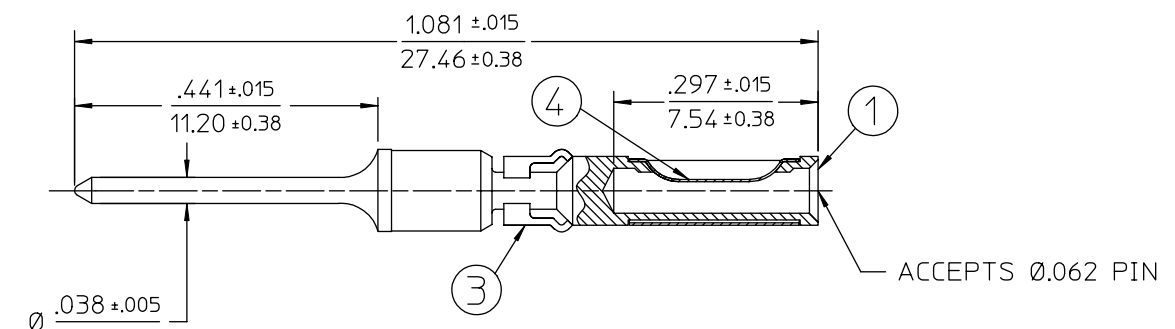
SHT. 4 OF 5

REV.
H

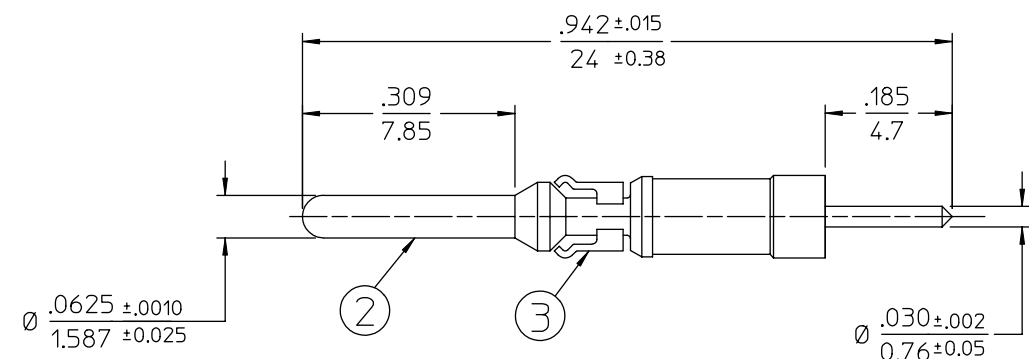
REV	DESCRIPTION	BY DATE	APPO
H	REVISED PER ECR# 6003	C.W.B. 09/16/99	W.P.M.



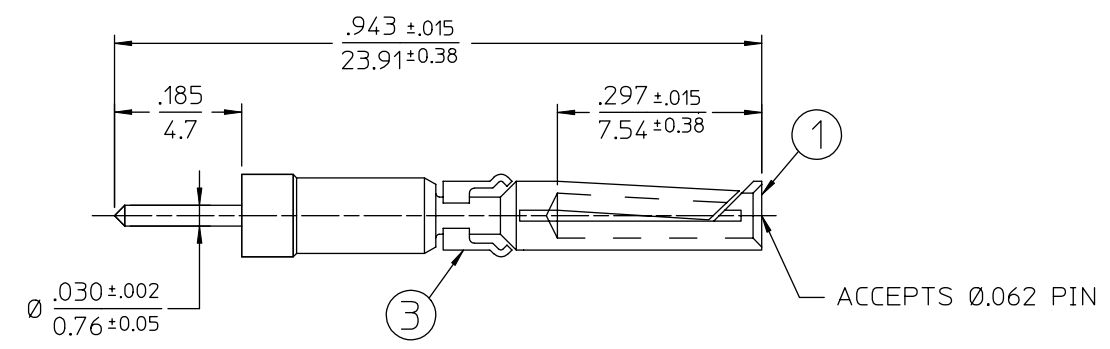
CATALOG NO 7130 SHOWN



CATALOG NO 7131 SHOWN

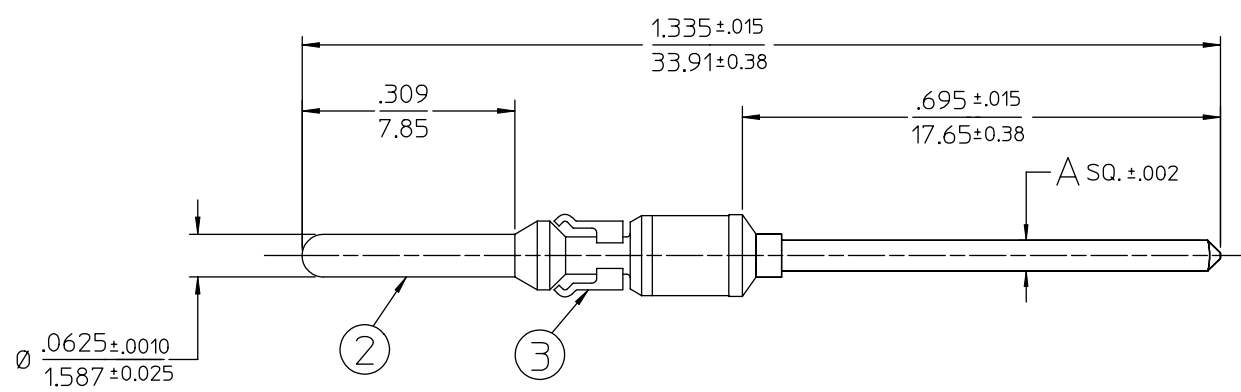


CATALOG NO 8124-Δ SHOWN



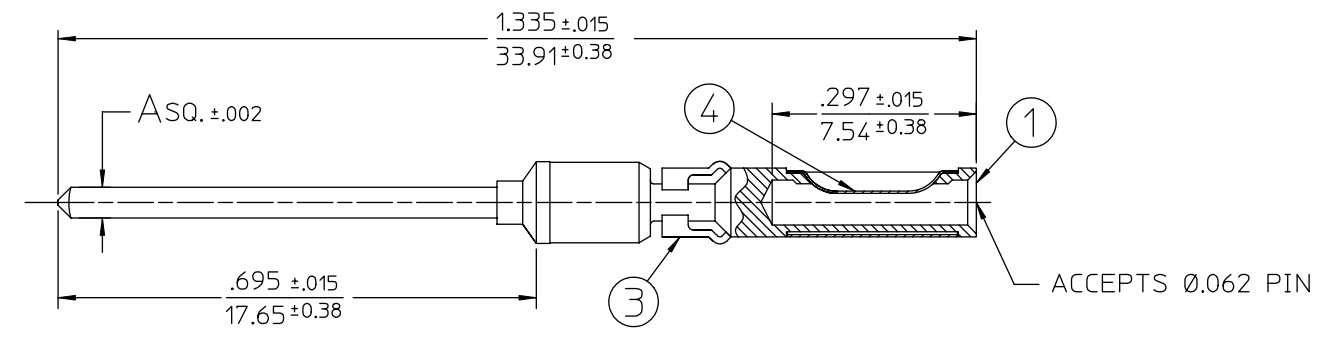
CATALOG NO 8125-Δ SHOWN

DIP SOLDER CONTACTS



CATALOG NO'S 8106-Δ AND 8114-Δ SHOWN

CAT. NO	A
8106-Δ	.045/1.43 SQ.
8114-Δ	.025/0.64 SQ.



CATALOG NO'S 8105-Δ AND 8113-Δ SHOWN

CAT. NO	A
8105-Δ	.045/1.43 SQ.
8113-Δ	.025/0.64 SQ.

WIRE WRAP CONTACTS

PER ANSI Y14.5M-1982 UNLESS OTHERWISE SPECIFIED: DIMENSIONS ARE IN INCHES OR INCHES / MM TOLERANCES DECIMALS .xx ± .02 .xxx ± .010 ANGLES ± SCALE: 5:1		Litton Winchester Electronics 400 PARK ROAD WATERTOWN, CONNECTICUT 06795	
CUSTOMER DRAWING		TITLE MRAC REMOVABLE PIN & SOCKET CONTACTS	
DRAWN K.D.B.	DATE 03/28/96	CHECKED W.P.M.	DATE 03/29/96
APPROVED V.B.H.	DATE 03/28/96	APPROVED R.D.R.	DATE 03/29/96
C		22891	REV. H

June 2006 - This drawing became the property of Winchester Electronics Corporation, Wallingford, CT.